

測試報告

號碼(No.) : CE/2019/90705

日期(Date) : 2019/09/10

頁數(Page): 1 of 4

Test Report

琿盛企業有限公司

SUPER SHENG ENTERPRISE CO., LTD.

新北市三峽區民生街151巷6號

NO. 6, LANE 151, MINSHENG ST., SANHSIA DIST., NEW TAIPEI CITY, TAIWAN 23741

以下測試樣品係由申請廠商所提供及確認 (The following sample(s) was/were submitted and identified by/on behalf of the applicant as):

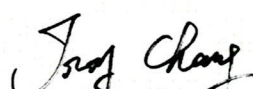
送樣廠商(Sample Submitted By) : 琿盛企業有限公司 (SUPER SHENG ENTERPRISE CO., LTD.)
樣品名稱(Sample Description) : SUPERSEN BRACKET NICKEL
樣品型號(Style/Item No.) : BKT-06 / BKT-06B / BKT-06C / BKT-06D / BKT-06-0 / BKT-07 / BKT-07A / BKT-08 / BKT-08B / BKT-08C / BKT-08D / BKT-09 / BKT-09A / BKT-09C / BKT-09D / BKT-16 / BKT-16-0
收件日期(Sample Receiving Date) : 2019/09/04
測試期間(Testing Period) : 2019/09/04 to 2019/09/10

=====
測試需求(Test Requested) : 依據客戶指定, 參考RoHS指令2011/65/EU Annex II測試鎘、鉛、汞、六價鉻. (As specified by client, with reference to RoHS Directive 2011/65/EU Annex II to determine Cadmium, Lead, Mercury, Cr(VI) contents in the submitted sample(s).)

測試方法(Test Method) : 請參閱下一頁 (Please refer to following pages).

測試結果(Test Results) : 請參閱下一頁 (Please refer to following pages).

結論(Conclusion) : 根據客戶所提供的樣品, 其鎘、鉛、汞、六價鉻的測試結果符合RoHS 2011/65/EU Annex II之限值要求. (Based on the performed tests on submitted sample(s), the test results of Cadmium, Lead, Mercury, Cr(VI) comply with the limits as set by RoHS Directive 2011/65/EU Annex II.)


Troy Chang / Manager - Tech
Signed for and behalf of
SGS TAIWAN LTD.
Chemical Laboratory - Taipei



This document is issued by the Company subject to its General Conditions of Service printed overleaf, available on request or accessible at <http://www.sgs.com/en/Terms-and-Conditions.aspx> and, for electronic format documents, subject to Terms and Conditions for Electronic Documents at <http://www.sgs.com/en/Terms-and-Conditions/Terms-e-Documents.aspx>. Attention is drawn to the limitation of liability, indemnification and jurisdiction issues defined therein. Any holder of this document is advised that information contained hereon reflects the Company's findings at the time of its intervention only and within the limits of Client's instructions, if any. The Company's sole responsibility is to its Client and this document does not exonerate parties to a transaction from exercising all their rights and obligations under the transaction documents. This document cannot be reproduced except in full, without prior written approval of the Company. Any unauthorized alteration, forgery or falsification of the content or appearance of this document is unlawful and offenders may be prosecuted to the fullest extent of the law. Unless otherwise stated the results shown in this test report refer only to the sample(s) tested.

測試報告

Test Report

號碼(No.) : CE/2019/90705

日期(Date) : 2019/09/10

頁數(Page): 2 of 4

琿盛企業有限公司

SUPER SHENG ENTERPRISE CO., LTD.

新北市三峽區民生街151巷6號

NO. 6, LANE 151, MINSHENG ST., SANHSIA DIST., NEW TAIPEI CITY, TAIWAN 23741

測試結果(Test Results)

測試部位(PART NAME)No.1 : 銀色金屬 (含鍍層) (SILVER COLORED METAL (INCLUDING THE PLATING LAYER))

測試項目 (Test Items)	單位 (Unit)	測試方法 (Method)	MDL	結果 (Result)	限值 (Limit)
				No.1	
鎘 / Cadmium (Cd)	mg/kg	參考IEC 62321-5 (2013), 以感應耦合電漿發射光譜儀檢測. / With reference to IEC 62321-5 (2013) and performed by ICP-OES.	2	n. d.	100
鉛 / Lead (Pb)	mg/kg		2	n. d.	1000
汞 / Mercury (Hg)	mg/kg	參考IEC 62321-4:2013+ AMD1:2017, 以感應耦合電漿發射光譜儀檢測. / With reference to IEC 62321-4:2013+ AMD1:2017 and performed by ICP-OES.	2	n. d.	1000
六價鉻 / Hexavalent Chromium Cr(VI)(#2)	µg/cm ²	參考IEC 62321-7-1 (2015), 以UV-VIS檢測. / With reference to IEC 62321-7-1 (2015) and performed by UV-VIS.	0.10	n. d.	-

備註(Note) :

1. mg/kg = ppm ; 0.1wt% = 1000ppm
2. n. d. = Not Detected (未檢出)
3. MDL = Method Detection Limit (方法偵測極限值)
4. "-" = Not Regulated (無規格值)
5. (#2) =
 - a. 當六價鉻結果大於0.13 µg/cm², 表示樣品表層含有六價鉻. / The sample is positive for Cr(VI) if the Cr(VI) concentration is greater than 0.13 µg/cm². The sample coating is considered to contain Cr(VI).
 - b. 當六價鉻結果為n. d. (濃度小於0.10 µg/cm²), 表示表層不含六價鉻. / The sample is negative for Cr(VI) if Cr(VI) is n. d. (concentration less than 0.10 µg/cm²). The coating is considered a non-Cr(VI) based coating.
 - c. 當六價鉻結果介於 0.10 及 0.13 µg/cm² 時, 無法確定塗層是否含有六價鉻. / The result between 0.10 µg/cm² and 0.13 µg/cm² is considered to be inconclusive - unavoidable coating variations may influence the determination.

This document is issued by the Company subject to its General Conditions of Service printed overleaf, available on request or accessible at <http://www.sgs.com/en/Terms-and-Conditions.aspx> and, for electronic format documents, subject to Terms and Conditions for Electronic Documents at <http://www.sgs.com/en/Terms-and-Conditions/Terms-e-Document.aspx>. Attention is drawn to the limitation of liability, indemnification and jurisdiction issues defined therein. Any holder of this document is advised that information contained hereon reflects the Company's findings at the time of its intervention only and within the limits of Client's instructions, if any. The Company's sole responsibility is to its Client and this document does not exonerate parties to a transaction from exercising all their rights and obligations under the transaction documents. This document cannot be reproduced except in full, without prior written approval of the Company. Any unauthorized alteration, forgery or falsification of the content or appearance of this document is unlawful and offenders may be prosecuted to the fullest extent of the law. Unless otherwise stated the results shown in this test report refer only to the sample(s) tested.

測試報告

Test Report

號碼(No.) : CE/2019/90705

日期(Date) : 2019/09/10

頁數(Page): 3 of 4

琿盛企業有限公司

SUPER SHENG ENTERPRISE CO., LTD.

新北市三峽區民生街151巷6號

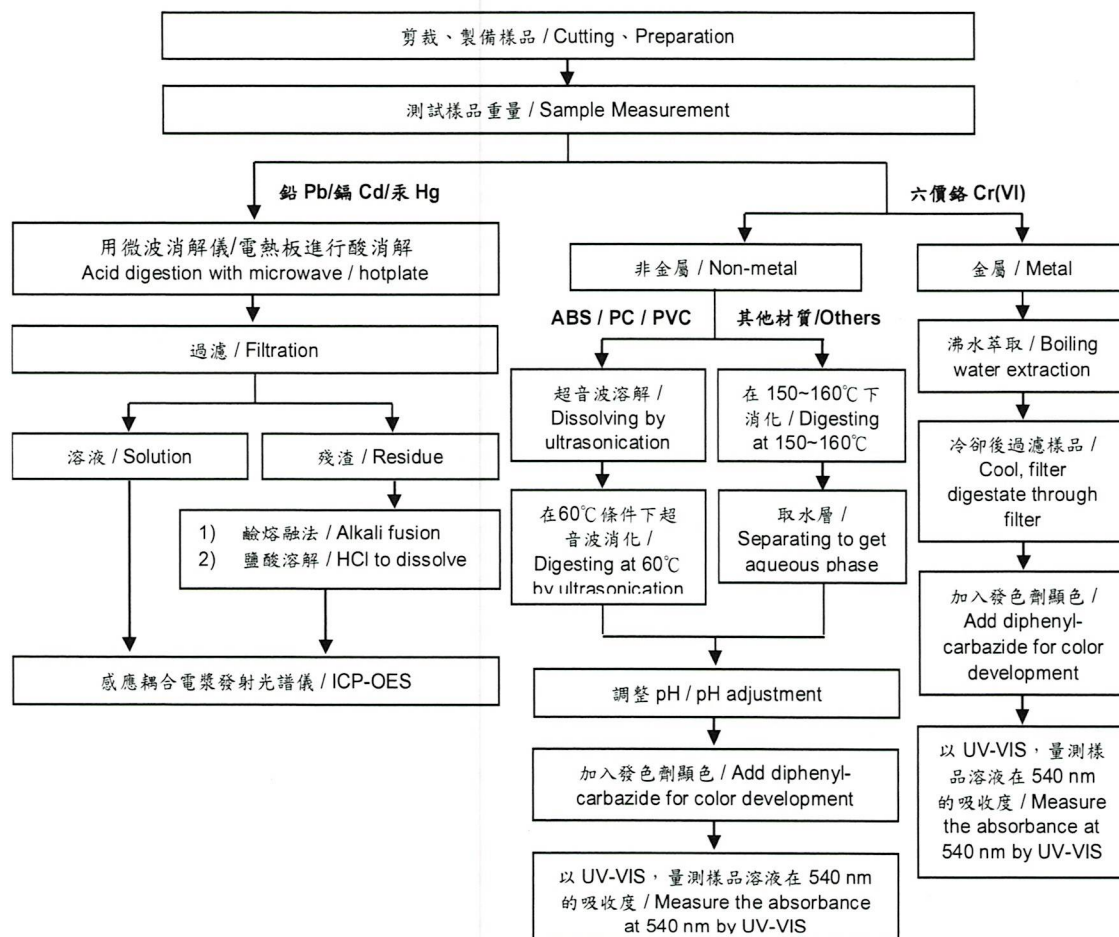
NO. 6, LANE 151, MINSHENG ST., SANHSIA DIST., NEW TAIPEI CITY, TAIWAN 23741

重金屬流程圖 / Analytical flow chart of Heavy Metal

根據以下的流程圖之條件，樣品已完全溶解。(六價鉻測試方法除外)

These samples were dissolved totally by pre-conditioning method according to below flow chart. (Cr⁶⁺ test method excluded)

- 測試人員：陳恩臻 / Technician : Rita Chen
- 測試負責人：張啟興 / Supervisor: Troy Chang



This document is issued by the Company subject to its General Conditions of Service printed overleaf, available on request or accessible at <http://www.sgs.com/en/Terms-and-Conditions.aspx> and, for electronic format documents, subject to Terms and Conditions for Electronic Documents at <http://www.sgs.com/en/Terms-and-Conditions/Terms-e-Document.aspx>. Attention is drawn to the limitation of liability, indemnification and jurisdiction issues defined therein. Any holder of this document is advised that information contained hereon reflects the Company's findings at the time of its intervention only and within the limits of Client's instructions, if any. The Company's sole responsibility is to its Client and this document does not exonerate parties to a transaction from exercising all their rights and obligations under the transaction documents. This document cannot be reproduced except in full, without prior written approval of the Company. Any unauthorized alteration, forgery or falsification of the content or appearance of this document is unlawful and offenders may be prosecuted to the fullest extent of the law. Unless otherwise stated the results shown in this test report refer only to the sample(s) tested.

測試報告

號碼(No.) : CE/2019/90705

日期(Date) : 2019/09/10

頁數(Page): 4 of 4

Test Report

琥盛企業有限公司

SUPER SHENG ENTERPRISE CO., LTD.

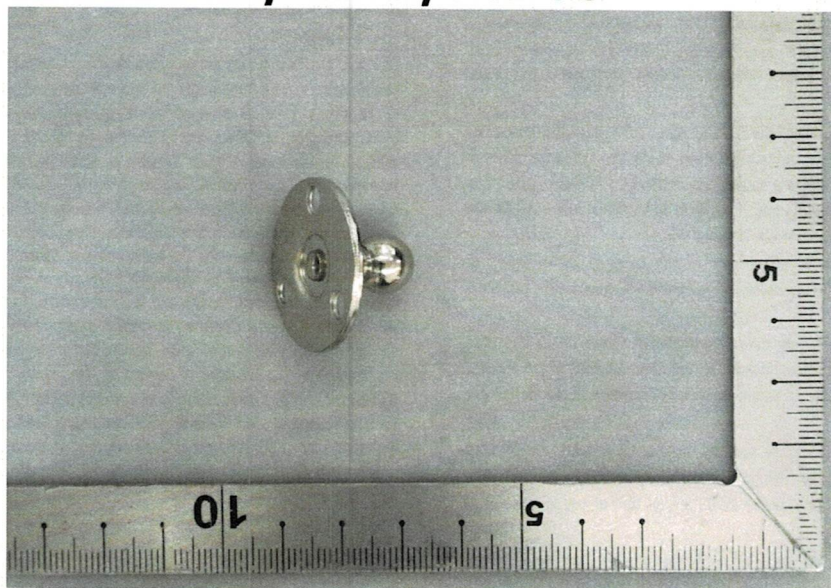
新北市三峽區民生街151巷6號

NO. 6, LANE 151, MINSHENG ST., SANHSIA DIST., NEW TAIPEI CITY, TAIWAN 23741

* 照片中如有箭頭標示，則表示為實際檢測之樣品/部位。 *

(The tested sample / part is marked by an arrow if it's shown on the photo.)

CE/2019/90705



** 報告結尾 (End of Report) **

This document is issued by the Company subject to its General Conditions of Service printed overleaf, available on request or accessible at <http://www.sgs.com/en/Terms-and-Conditions.aspx> and, for electronic format documents, subject to Terms and Conditions for Electronic Documents at <http://www.sgs.com/en/Terms-and-Conditions/Terms-e-Document.aspx>. Attention is drawn to the limitation of liability, indemnification and jurisdiction issues defined therein. Any holder of this document is advised that information contained hereon reflects the Company's findings at the time of its intervention only and within the limits of Client's instructions, if any. The Company's sole responsibility is to its Client and this document does not exonerate parties to a transaction from exercising all their rights and obligations under the transaction documents. This document cannot be reproduced except in full, without prior written approval of the Company. Any unauthorized alteration, forgery or falsification of the content or appearance of this document is unlawful and offenders may be prosecuted to the fullest extent of the law. Unless otherwise stated the results shown in this test report refer only to the sample(s) tested.